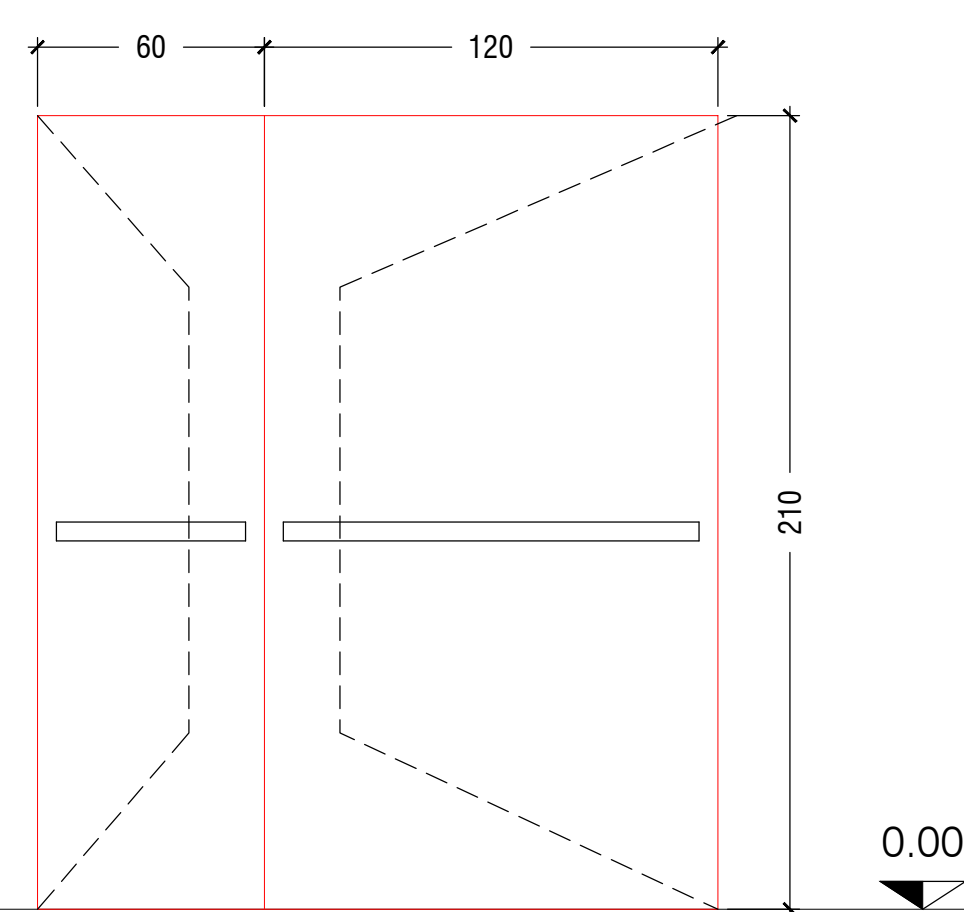


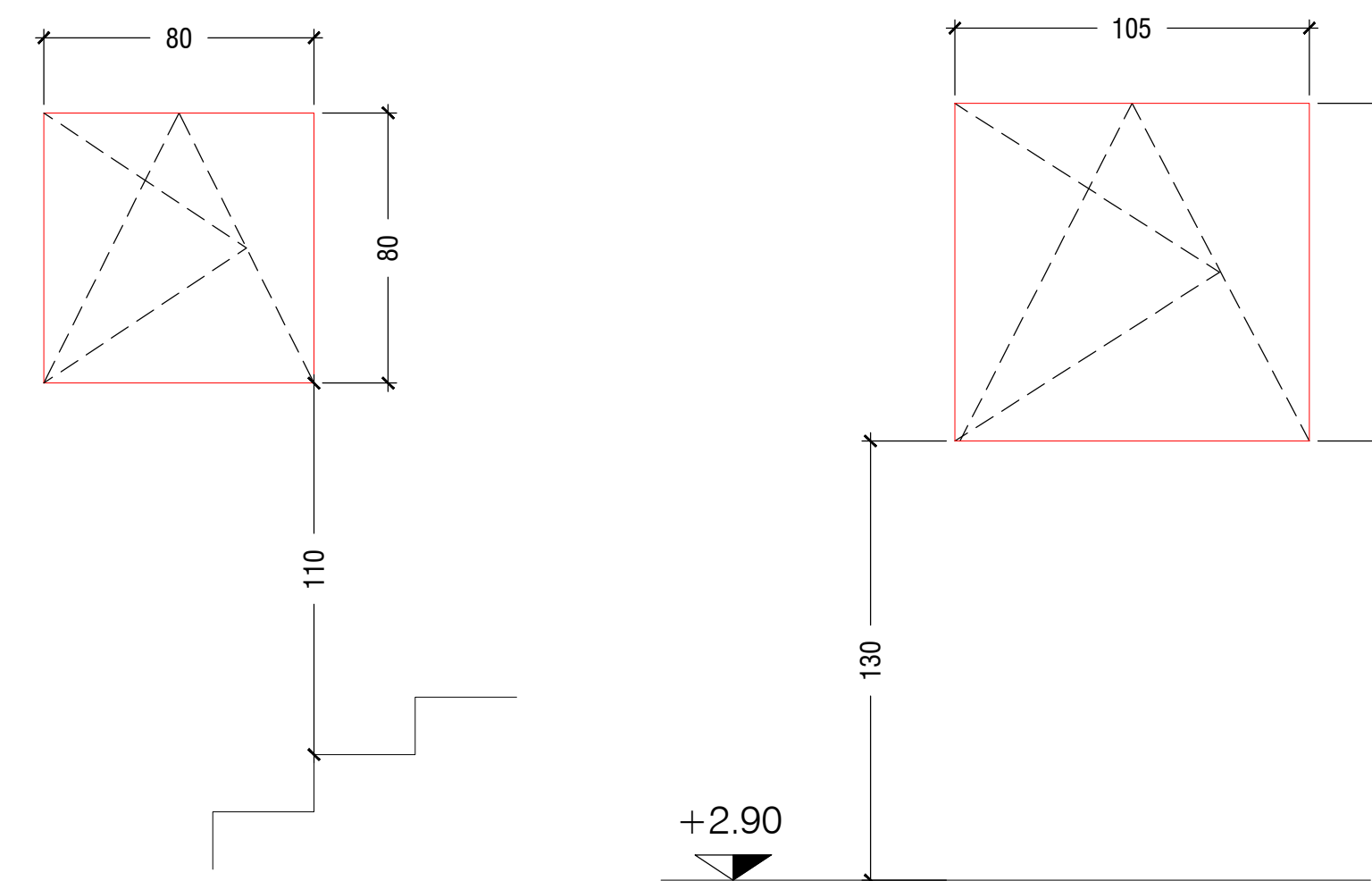
**Tipo S1 n°1**

- portafinestra 180x210
- ante - 120x210 anta a vetro
- - 60x210 anta piena
- maniglione antipanico push bar sulle due ante
- autochiusura
- serratura e maniglia esterna
- apertura verso esterno
- peso 160,32 kg



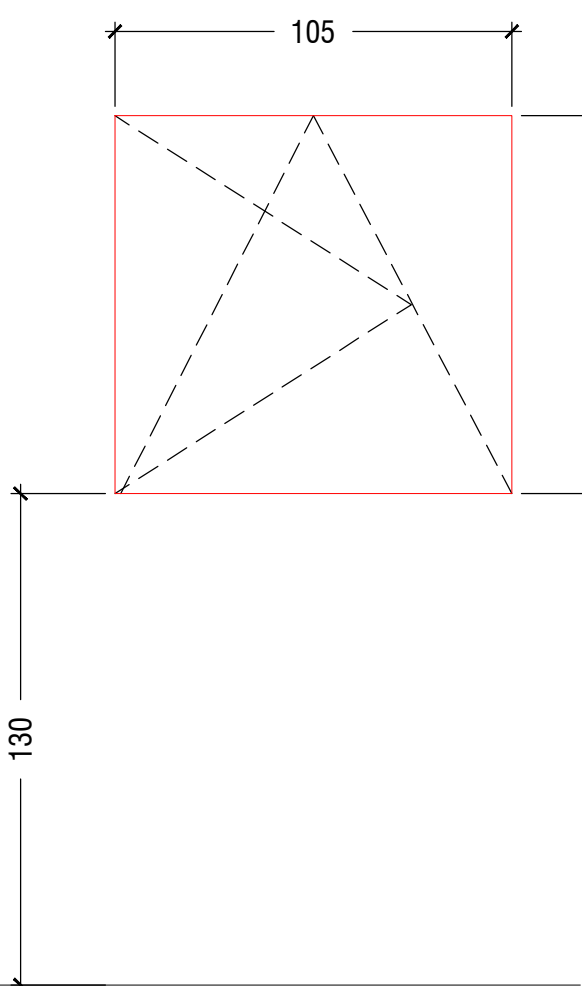
**tipo S2 n°1**

- finestra 80x80
- apertura a vasistas
- anta tirare sinistra
- peso 31,53 kg



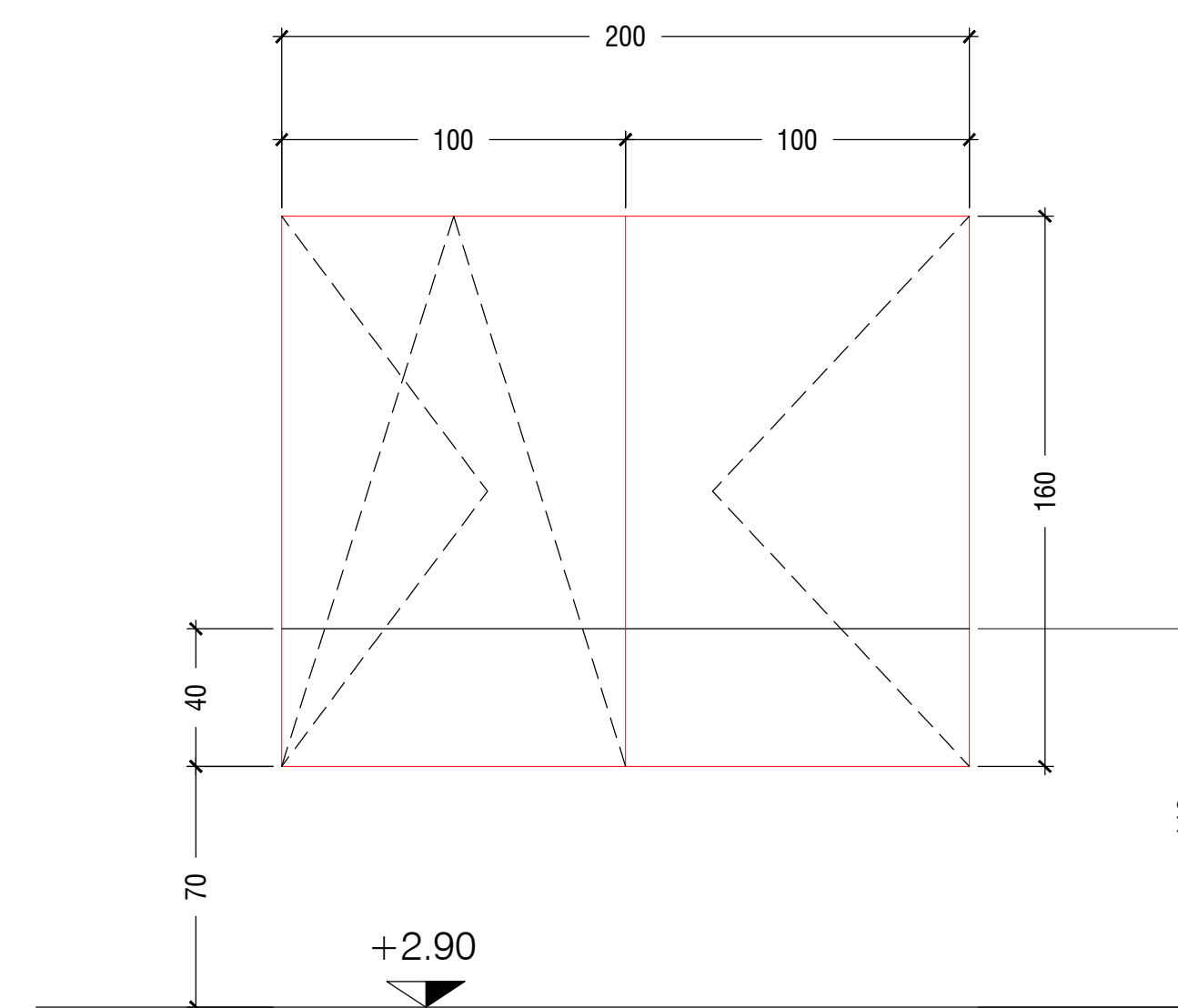
**S3 tipo n°1**

- finestra 105x100
- apertura a vasistas
- anta tirare sinistra
- peso 49,27 kg



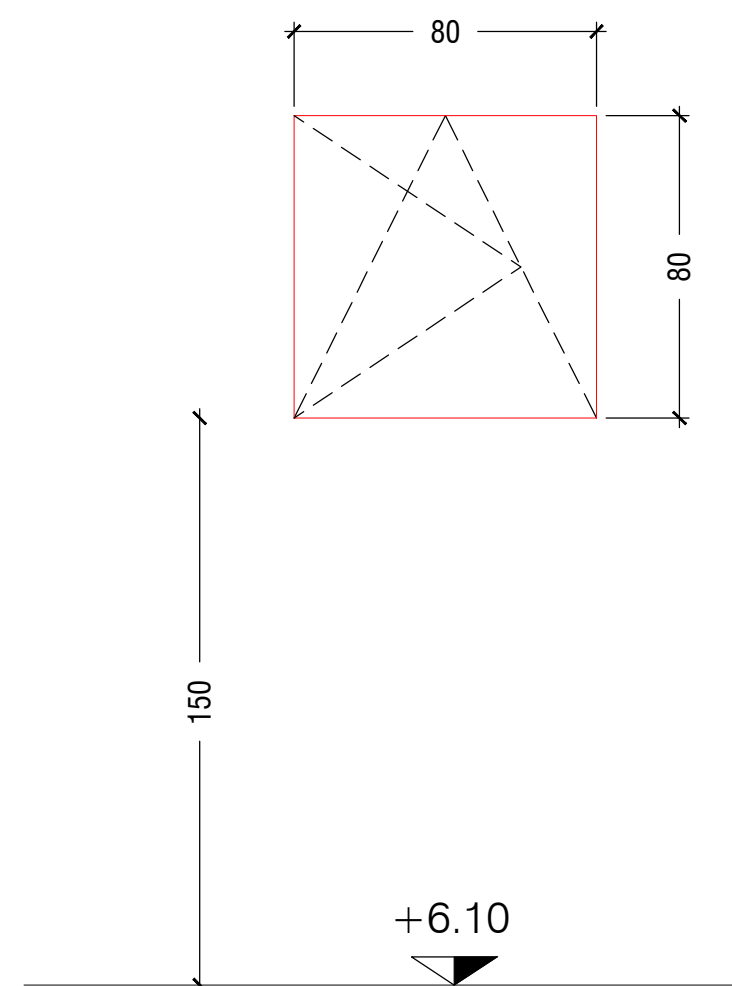
**tipo S4 n°1**

- finestra 200x160
- apertura a vasistas
- ante
- profilo parapetto per h 110 da terra
- peso 141,48 kg



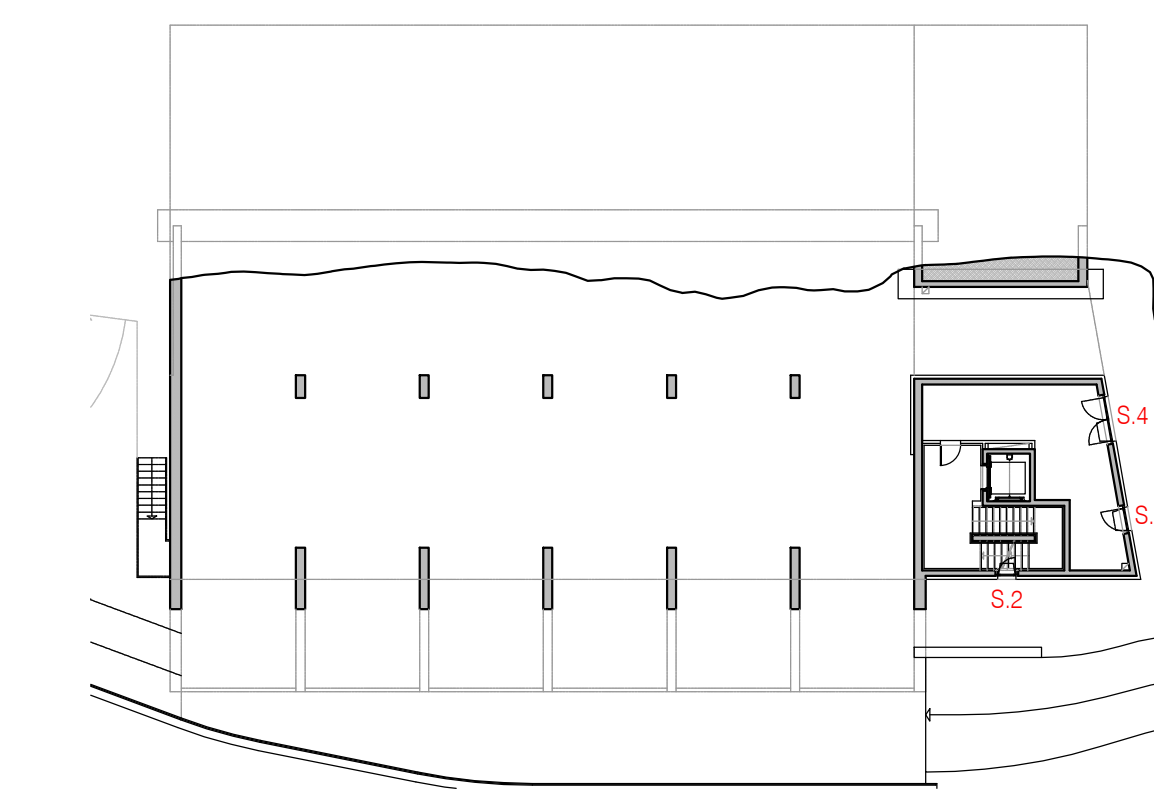
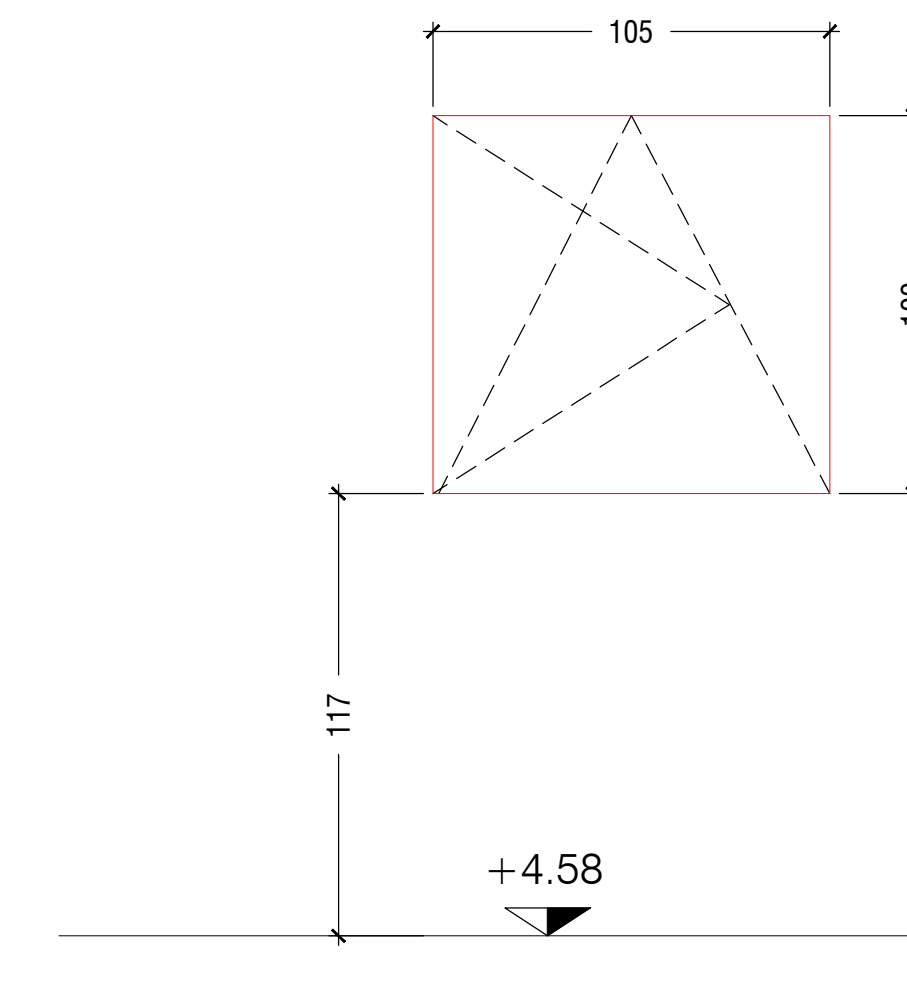
**tipo S5 n°1**

- finestra 80x80
- apertura a vasistas
- anta tirare a sinistra

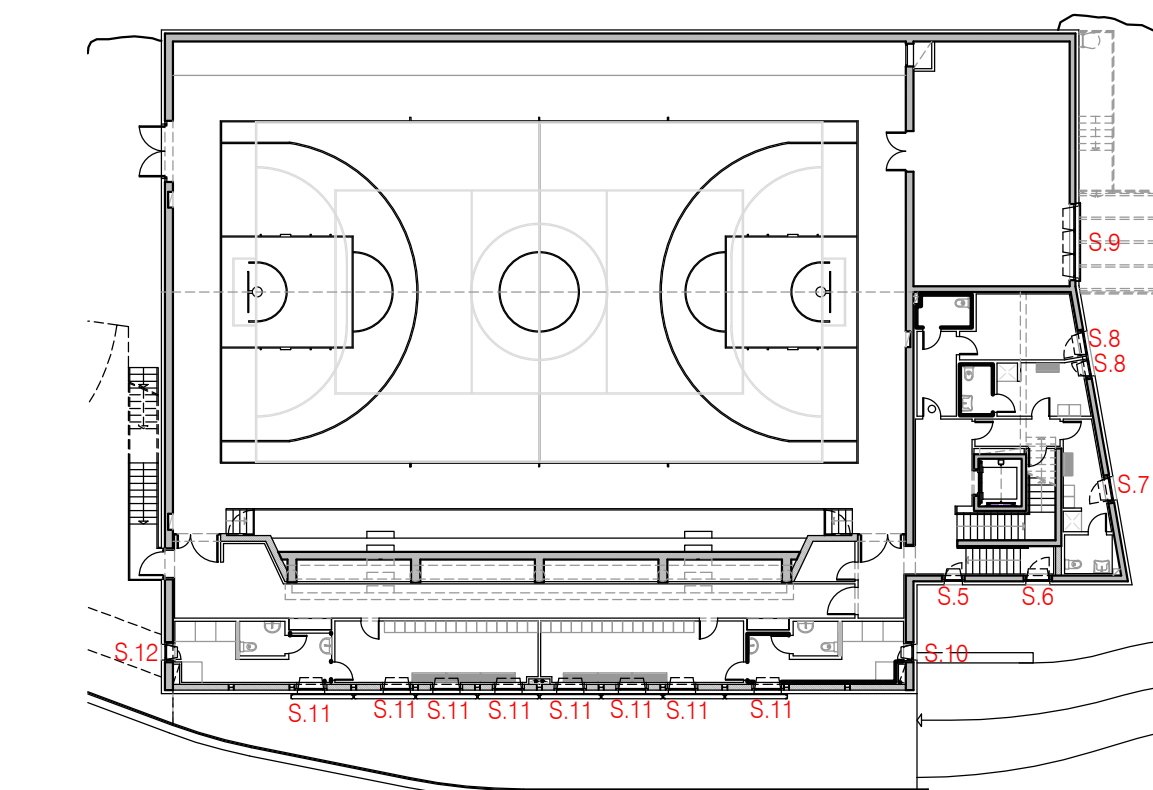


**Tipo S6 n°1**

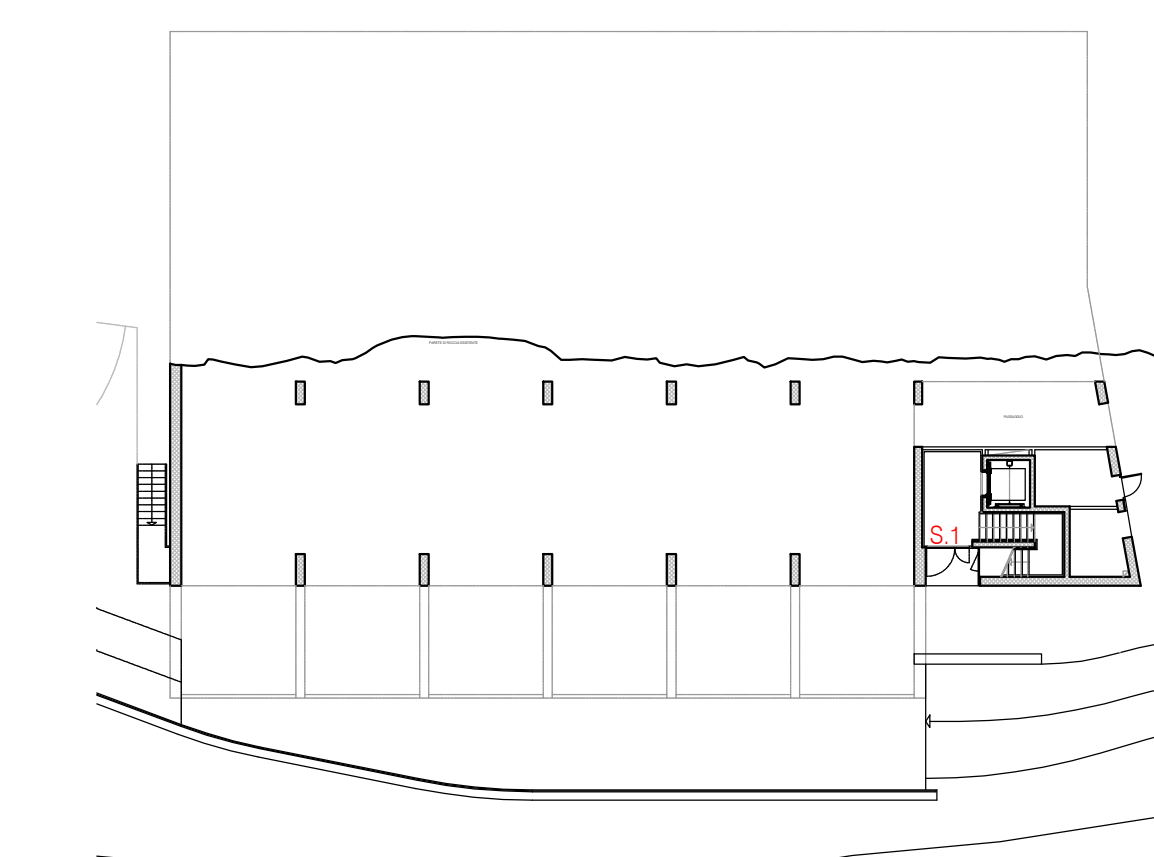
- portafinestra 105x100
- apertura a vasistas
- anta tirare sinistra



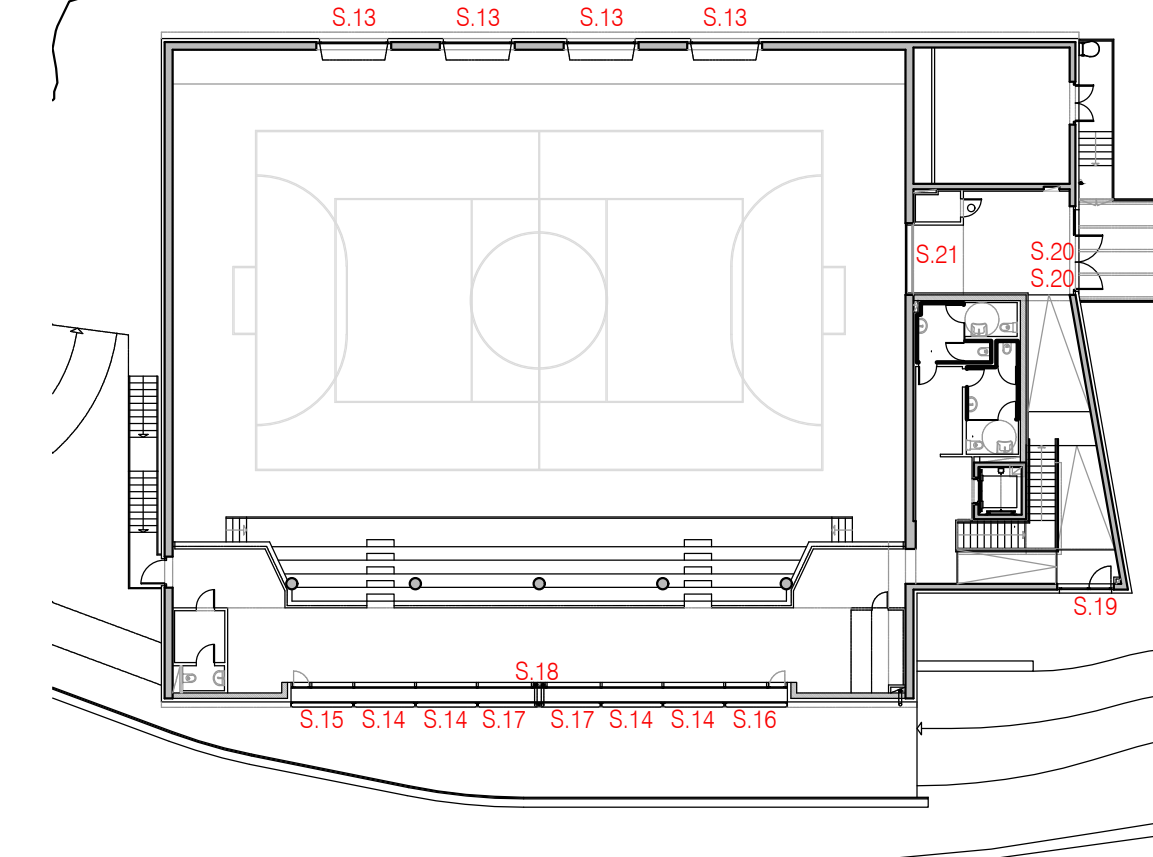
Pianta piano ± 0.00



Pianta piano + 6.10



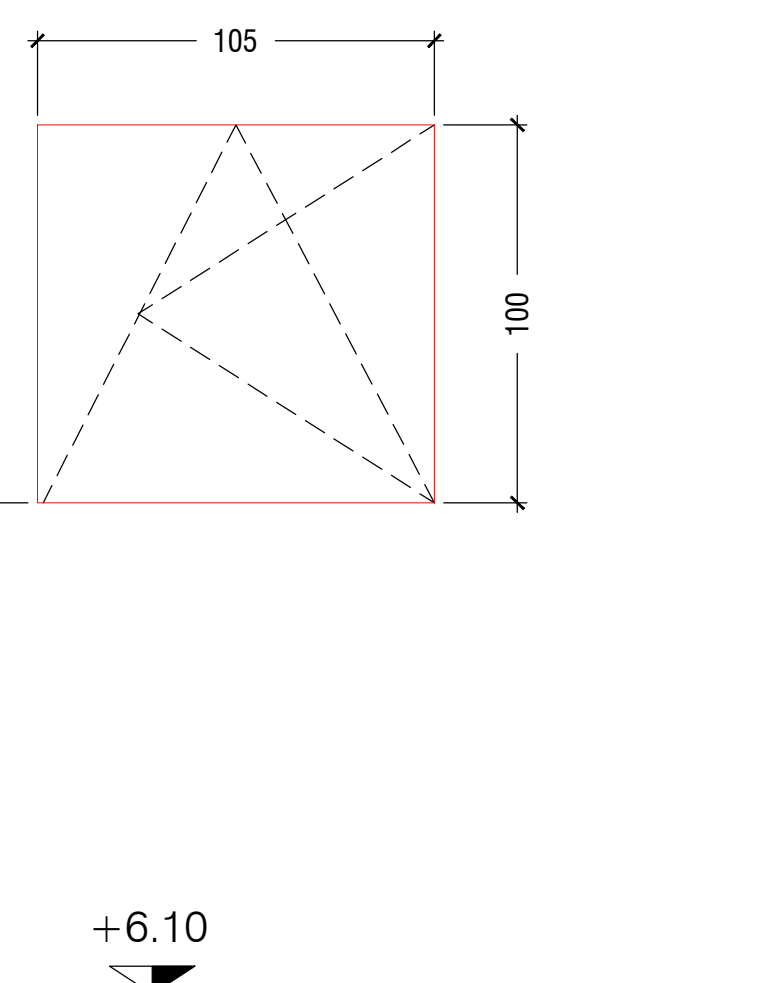
Pianta piano + 2.90



Pianta piano ± 9.30

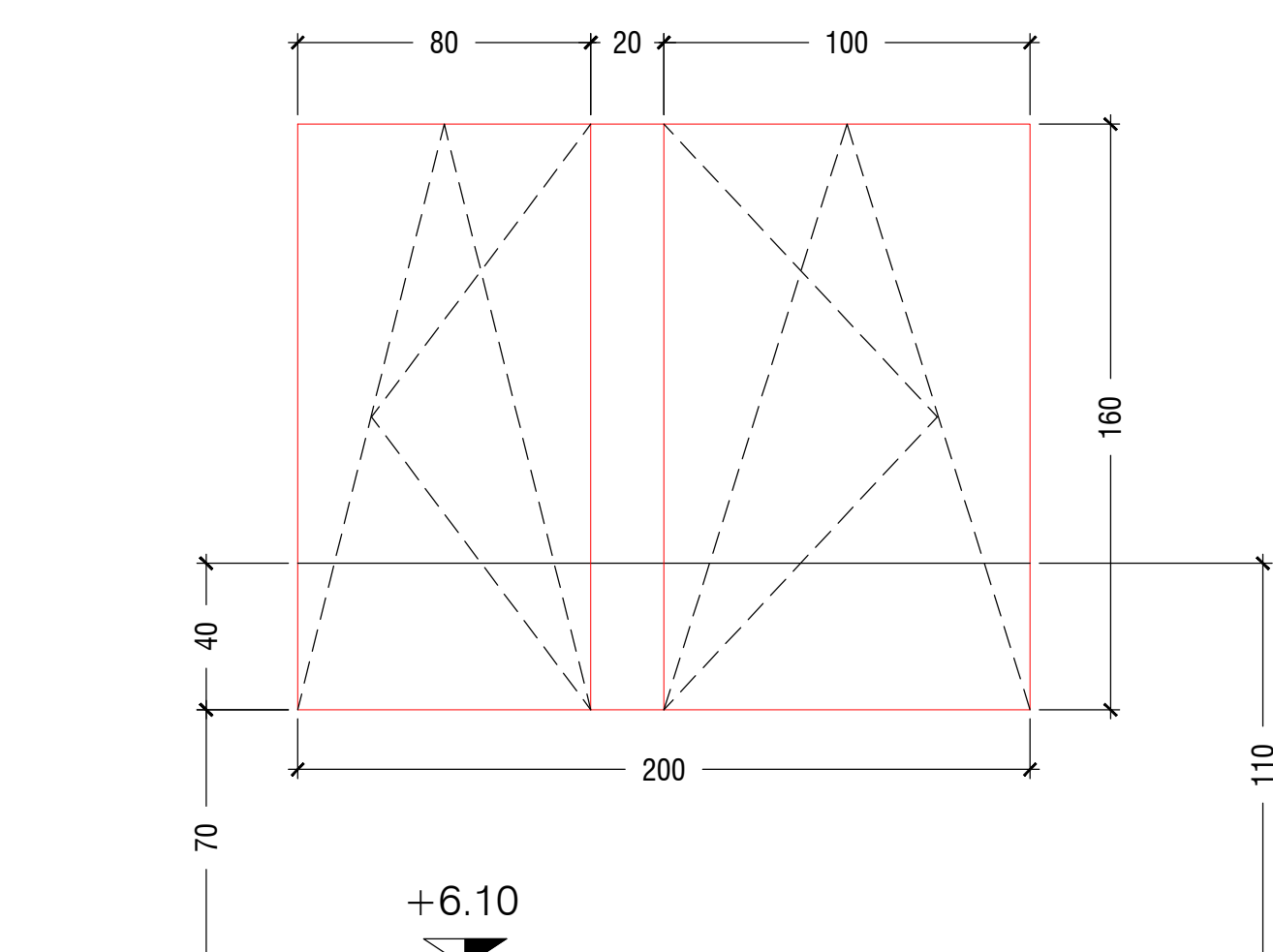
**tipo S7 n°1**

- finestra 105x100
- apertura a vasistas
- anta tirare destra



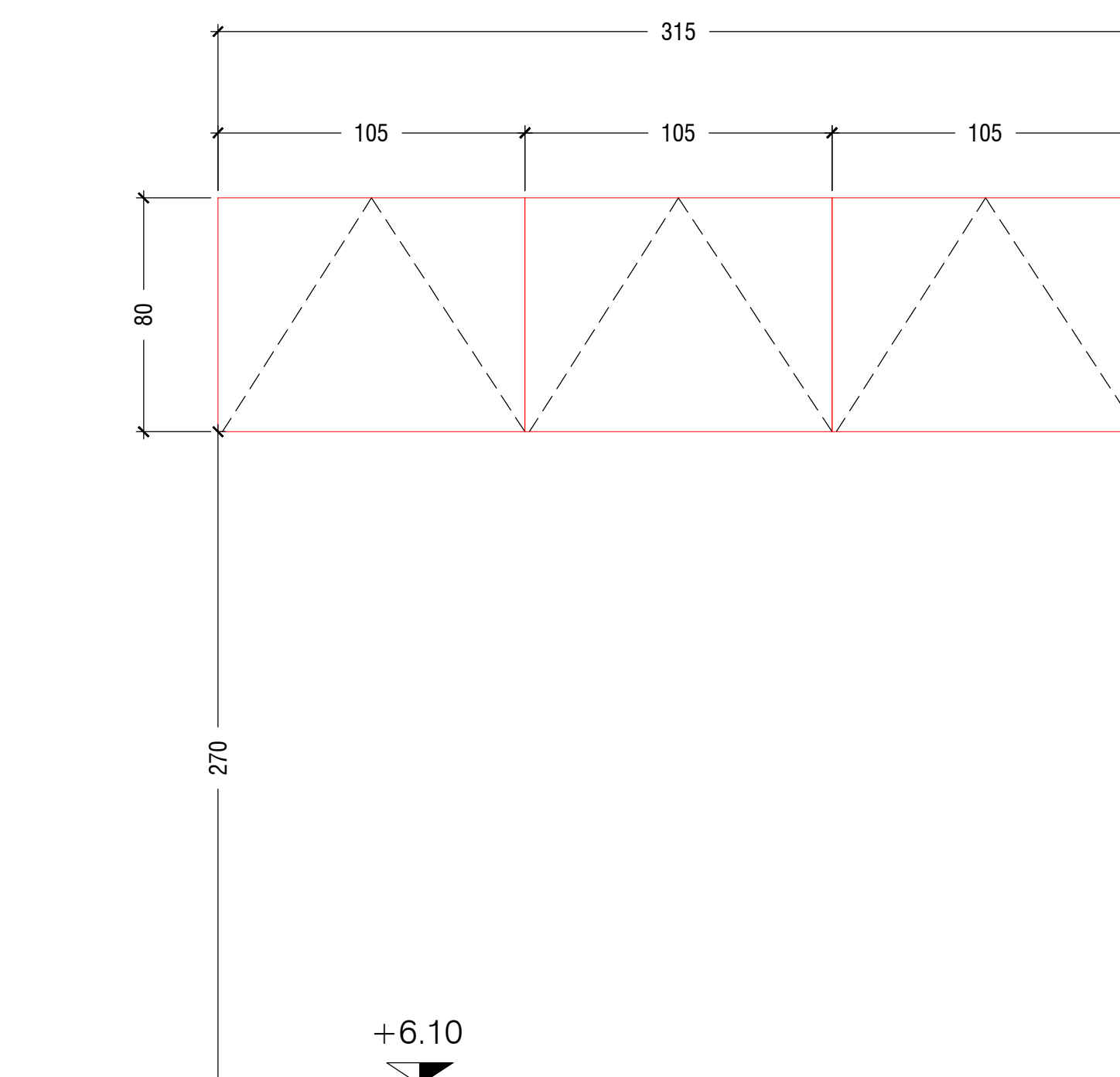
**tipo S8 n°1**

- finestra 200x160 (totale)
- finestra 80x160
- apertura a vasistas
- anta tirare sinistra
- finestra 100x160
- apertura a vasistas
- anta tirare destra
- fisso 20x160
- peso 140,02 kg



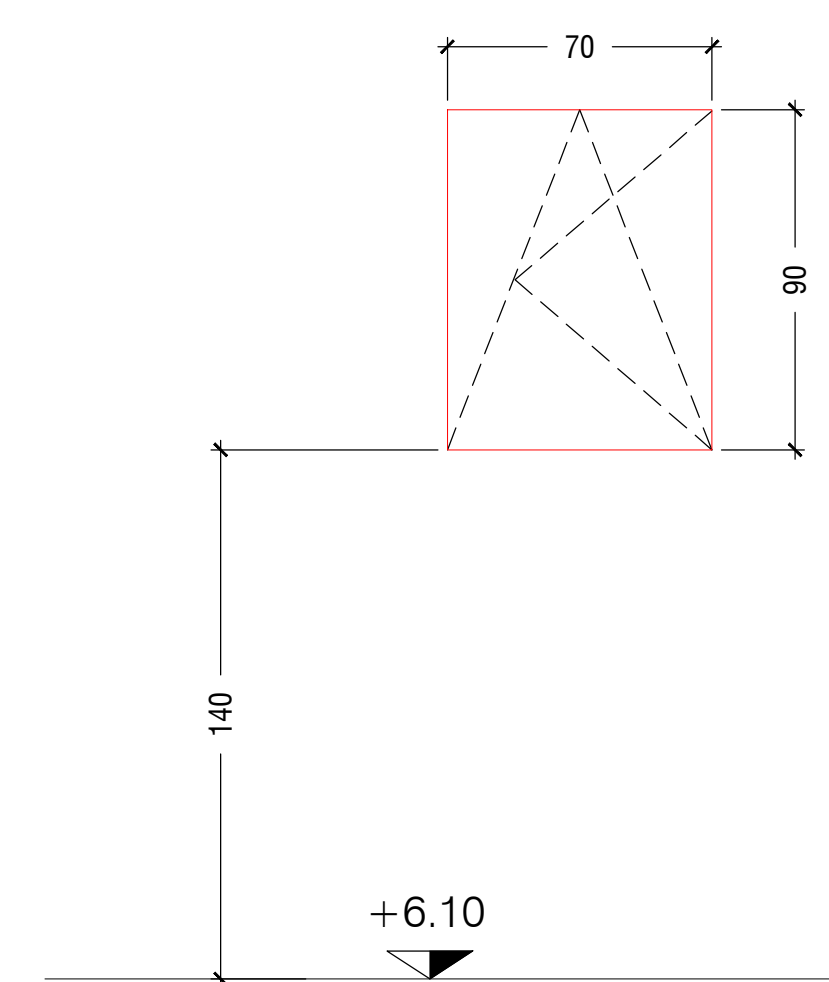
**tipo S9 n°1**

- finestra 315x80
- 3 ante 105x80
- apertura a vasistas motorizzata
- inferriata esterna antintrusione
- peso 112,18 kg



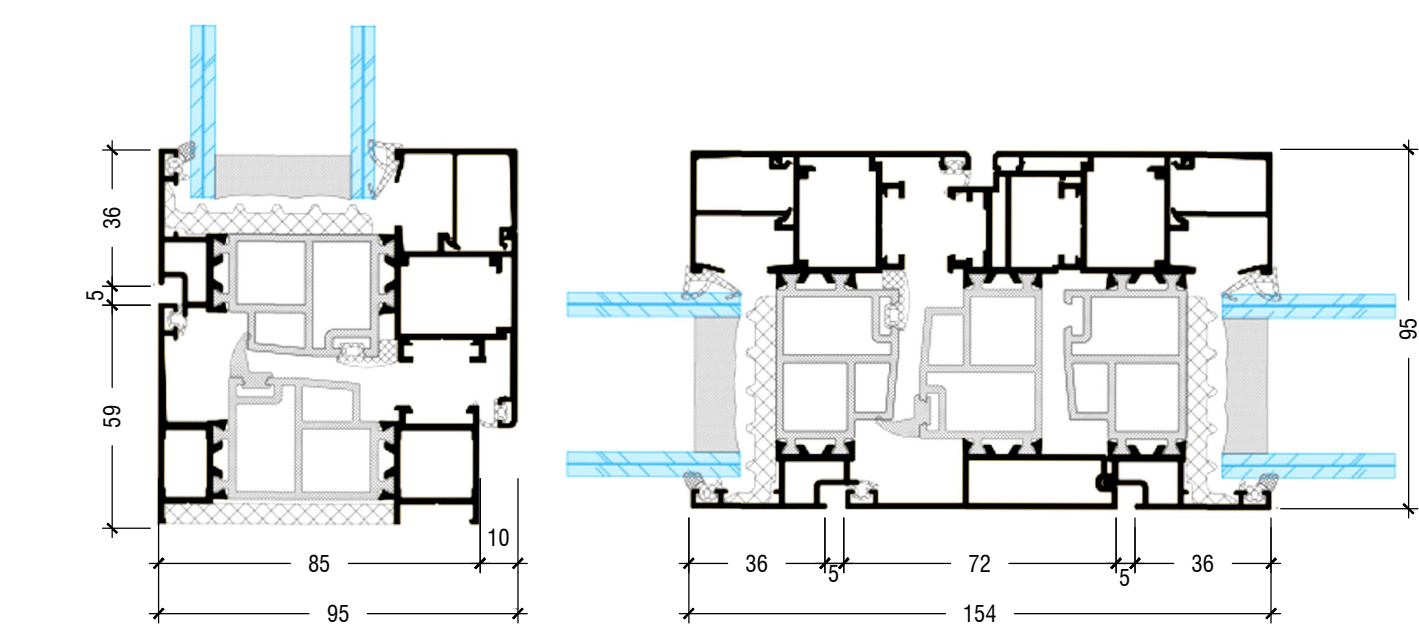
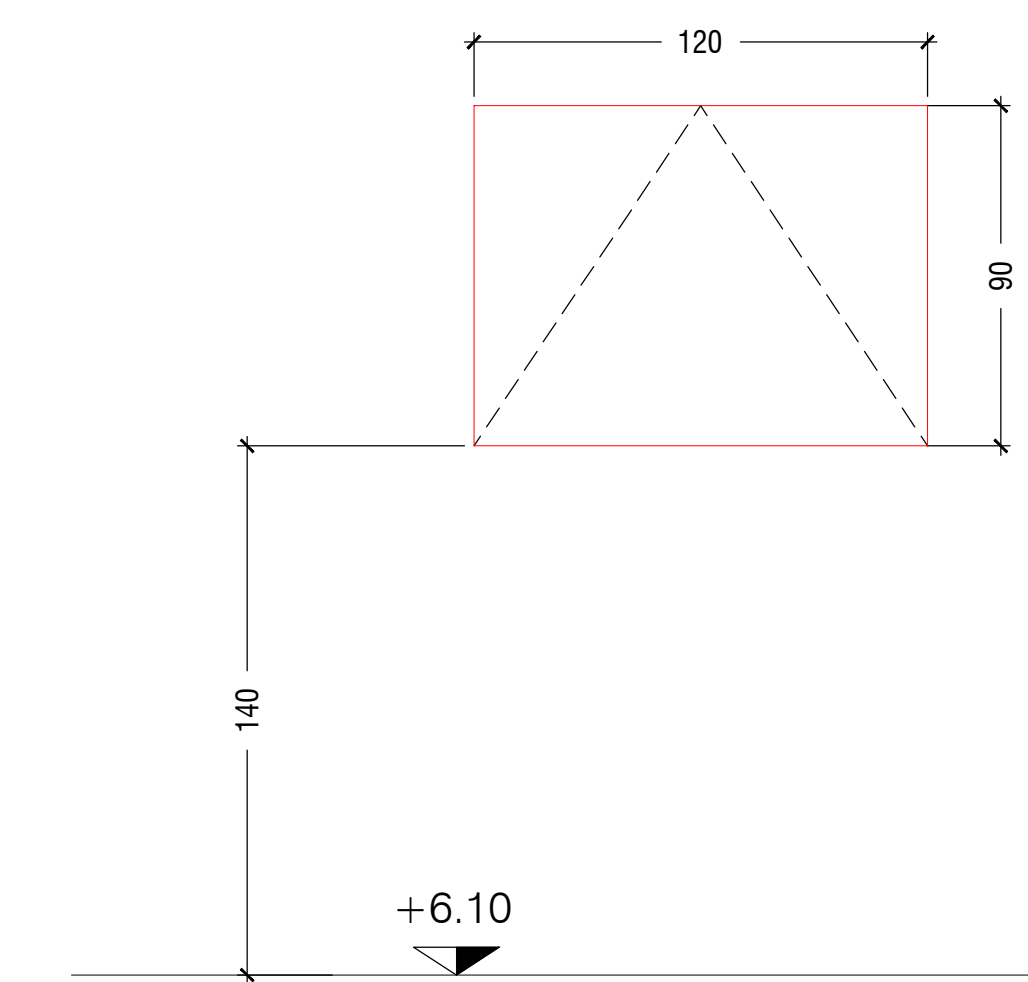
**tipo S10 n°1**

- finestra 70x90
- apertura a vasistas
- anta tirare a destra
- peso 31,33 kg



**Tipo n°8 S11**

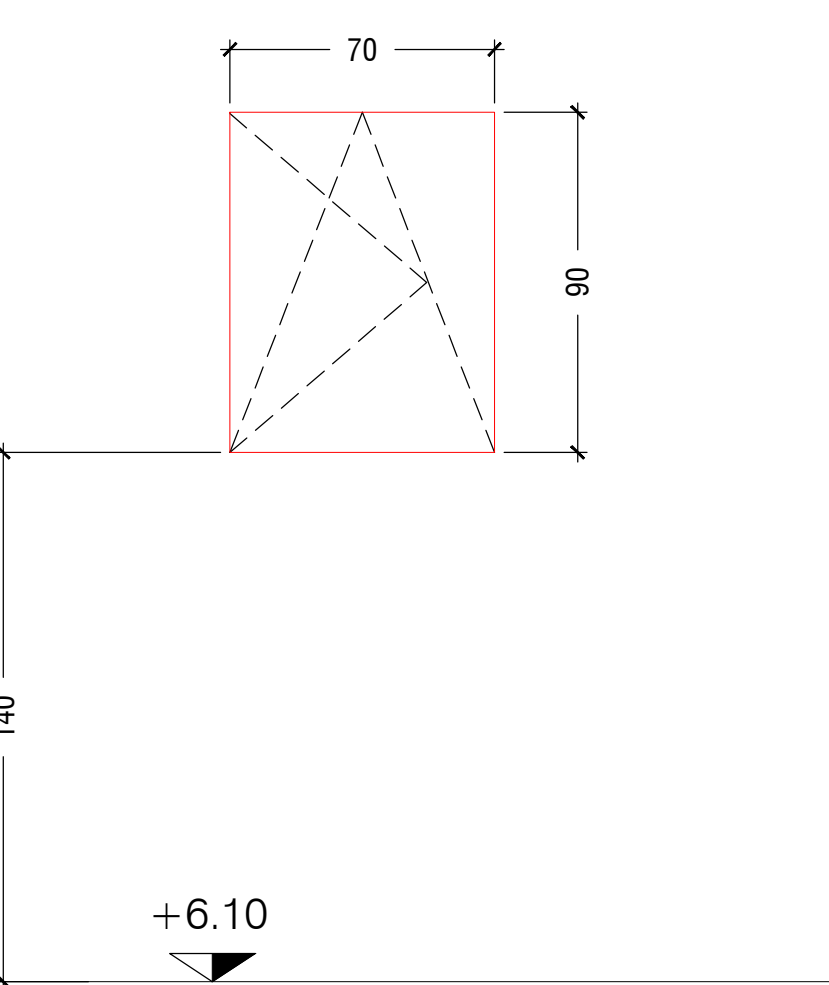
- finestra 120x90
- apertura a vasistas
- peso 50,37 kg



SEZIONE SERRAMENTO (tipo Termika - TK 85 wh)  
Scala 1:2

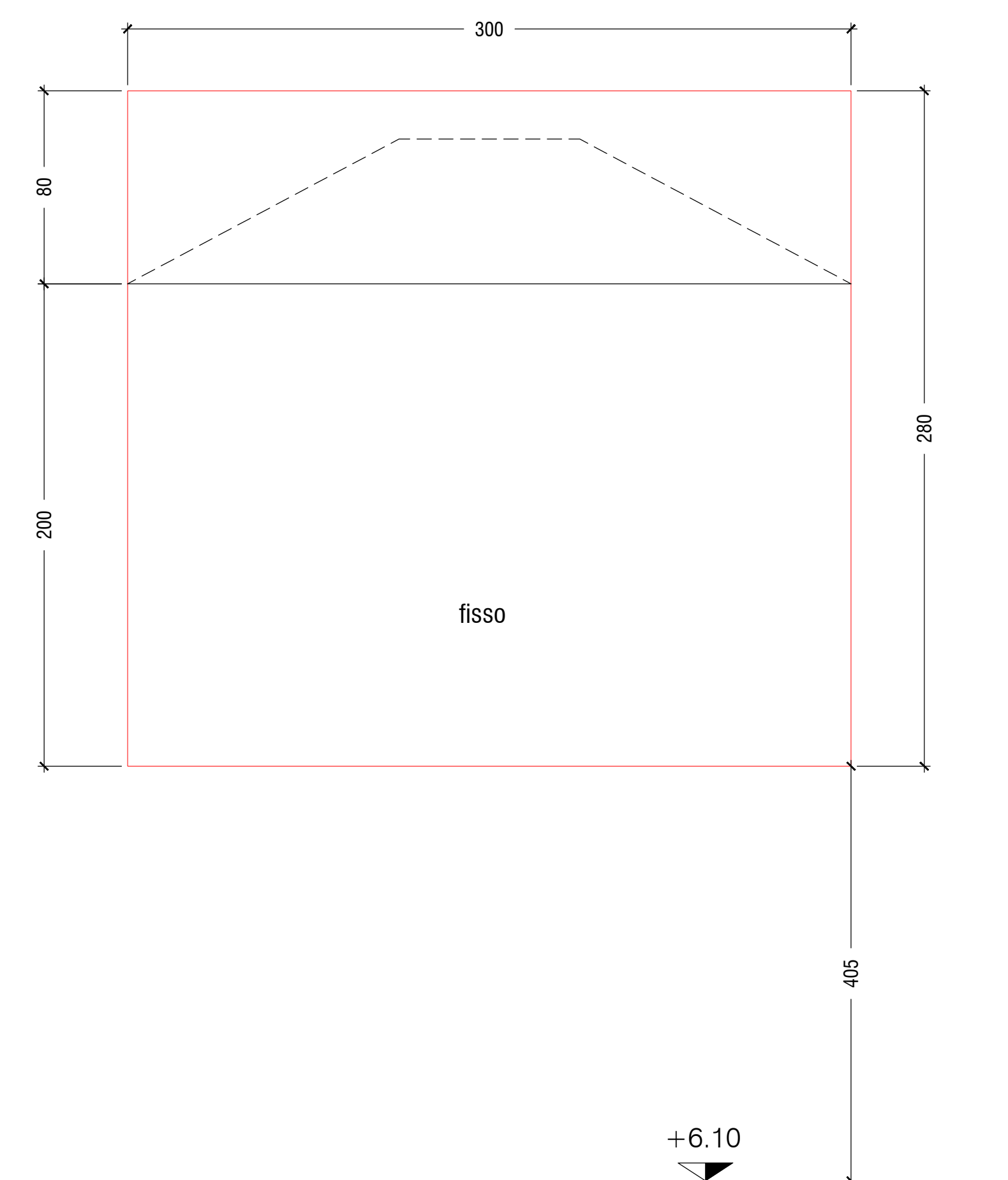
**tipo S12 n°1**

- finestra 70x90
- apertura a vasistas
- anta tirare sinistra
- peso 31,33 kg



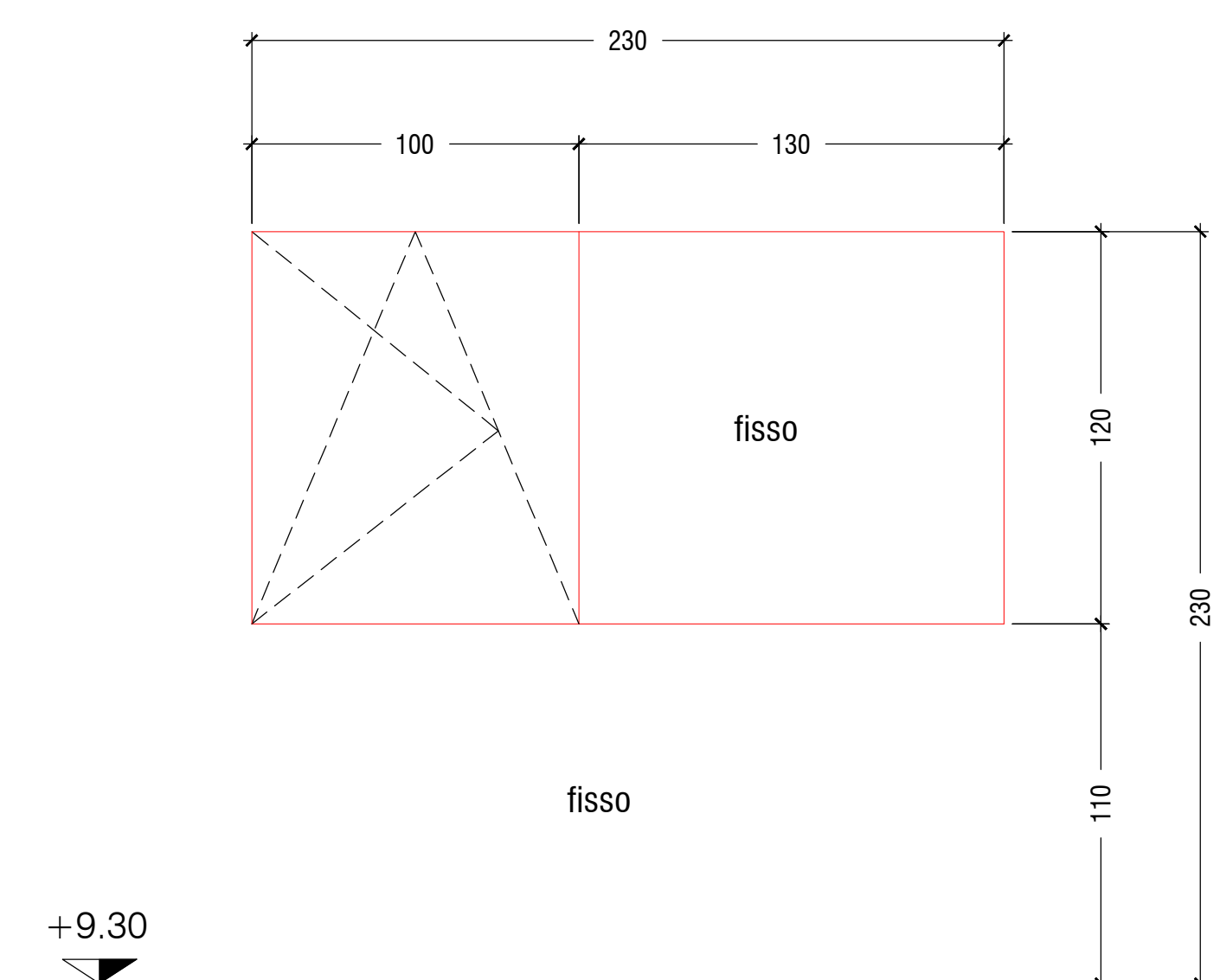
**tipo S13 n°4**

- finestra 300x280
- apertura a vasistas motorizzata 300x80
- vetro fisso 300x200
- peso 321,18 kg



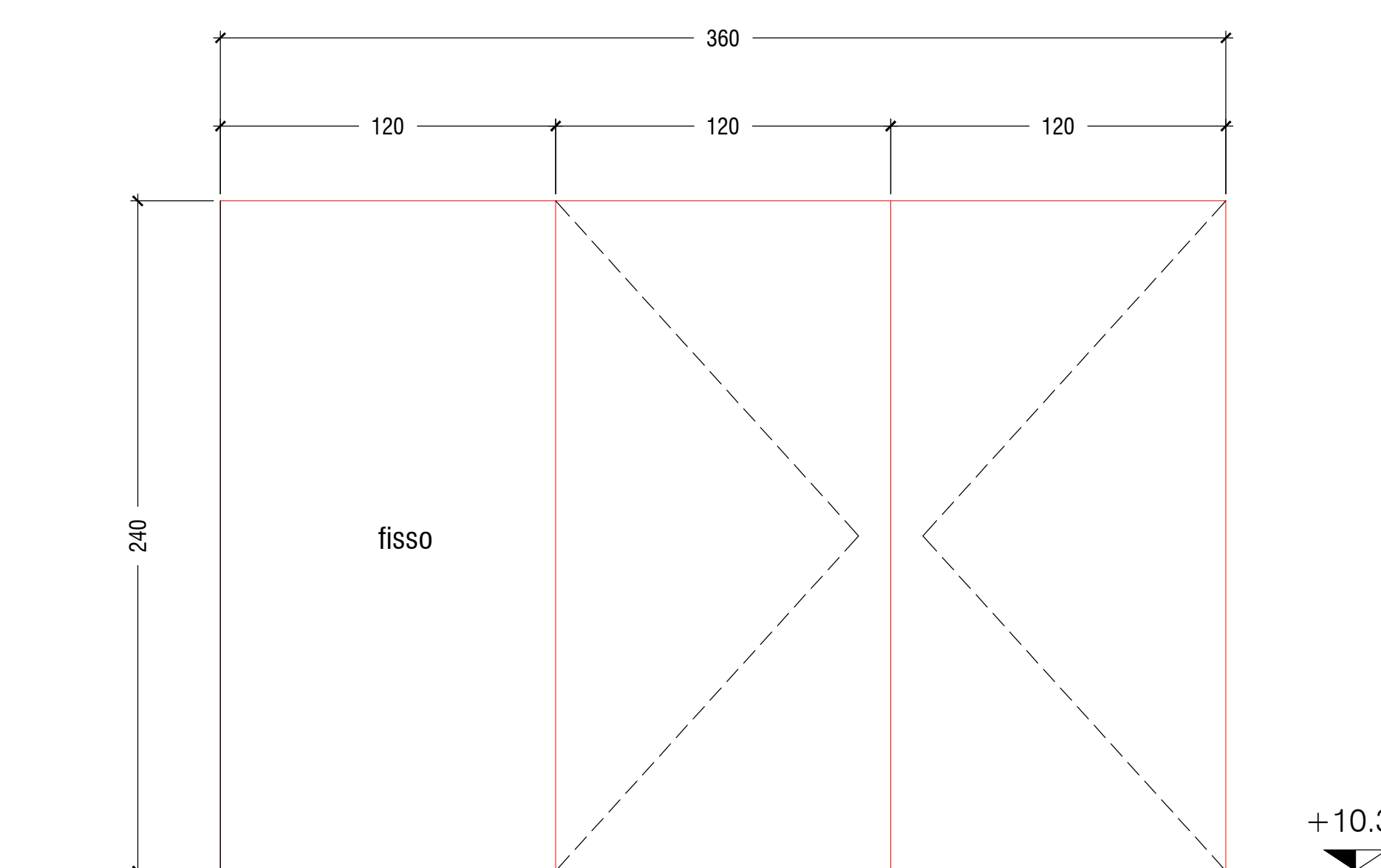
**tipo S19 n°1**

- finestra 230x230
- vetro fisso 230x110
- vetro fisso 130x120
- anta tirare a sinistra 100x120
- apertura a vasistas
- peso 120,1 kg



**tipo S20 n°1**

- portafinestra 360x240
- doppia anta a spingere esterno 120x240
- autochiusura
- push bar su due ante
- vetro fisso 120x240
- peso 285,78 kg



<p><b>MANDANTE:</b></p> <p>Arch. Giuseppe Spò</p> <p>COMUNE DI CIVO</p>		<p><b>COMUNE DI CIVO</b></p> <p>PROVINCIA DI SONDRIO</p> <p>AMMINISTRAZIONE COMUNALE DI CIVO</p> <p>Provincia Sondrio, SS 29019 - C.so SS9</p>
<p><b>COLLABORATORI:</b></p> <p>Arch. Daniele Farnè - Progettazione impianti meccanici</p>		
<p><b>PROGETTO ESECUTIVO</b></p>		<p>REALIZZAZIONE POLO SPORTIVO COMPRESORIALE IN FRAZIONE SERONE NEL COMUNE DI CIVO C.U.P. 44/B01014300002</p>
<p><b>ABACO PORTE E SERRAMENTI</b></p> <p><b>A.016.2</b></p>		
<p>Settembre 2024</p> <p>Rev. 01 12-03-2025</p>		<p>21011</p>